



HILLSBOROUGH  
California

[View as Webpage](#)

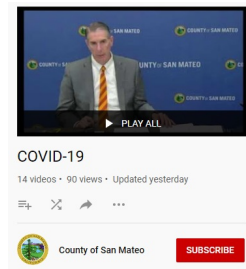
## WEDNESDAY TOWN INFORMATION

Visit San Mateo County's website at [www.smcgov.org](http://www.smcgov.org) for the latest information on COVID-19 and the Shelter in Place Order

### County Manager Media Briefings and COVID-19 Videos

San Mateo County Manager Mike Callagy's media briefings are available to view on YouTube in [this playlist](#) on the County's channel.

All COVID-19 related videos are also available to view by [clicking here](#).



### County is in need of able-bodied and willing volunteers

While the County has seen a tremendous number of willing and able volunteers during these unprecedented times (1,650 total sign-ups as of today!) more are always needed to fill the volunteers gaps.

A simple survey will help the County match your interest with openings at the County or a Community Based Organization. Signing up is easy on the San Mateo County's [volunteering homepage](#).



Hillsborough Councilmember Marie Chuang and resident Lorraine Tom volunteering at the Second Harvest Food Bank event on Tuesday.

Hillsborough is officially recognized as a Firewise Community



**FIREWISE USA**  
RESIDENTS REDUCING WILDFIRE RISKS

Congratulations to [Firewise](#) Hillsborough and Chair David Weinberg! After six months of planning, organizing and submitting documentation, Firewise Hillsborough has just been certified as an official Firewise USA community. Firewise Hillsborough works with residents, the Town and Central County Fire Department to provide education, support neighborhood projects and advocate for a wildfire resistive Hillsborough.

Please see or print the Firewise Hillsborough certificates in the following links. Please note that Hillsborough is divided into two areas ([north](#) and [south](#)). You may want to provide a copy of the certificate to your homeowners insurance company.

Firewise Hillsborough wants to remind residents that during the Shelter-in-Place Order when commercial gardeners and landscapers are NOT permitted, you can still review the [Wildland Fire Protection Checklist](#) and plan your projects. You will have plans ready to work when the Shelter-in-Place Order is lifted for landscaping and yard maintenance.

To contact Firewise Hillsborough please send an e-mail to [firewise@hillsborough.net](mailto:firewise@hillsborough.net).

---

### Resources for San Mateo County residents



**COUNTY OF SAN MATEO**  
JOINT INFORMATION CENTER  
EMERGENCY OPERATIONS CENTER

San Mateo County has created a catch-all resource website for residents. The page has information on topics such as childcare, unemployment benefits, volunteering, donations, and more:

[cmo.smcgov.org/covid-19-resources](http://cmo.smcgov.org/covid-19-resources)

Be sure to also check out the County's shelter in place FAQ page at:

<https://www.smcgov.org/shelter-place-faqs>

---

**SAN MATEO COUNTY**  
**STRONG**



The San Mateo County Strong Fund:  
**We Are in This Together**

Donate today: you can choose to help individuals/families, small businesses, non-profits or wherever the need is greatest.

### San Mateo Strong - Donate Now

Join San Mateo County's relief efforts and make direct donations that will specifically benefit San Mateo County residents, small businesses and non-profits

The fund – San Mateo County Strong Fund – is accepting donations to help those who can least afford to weather the economic impacts from the coronavirus outbreak. Please visit [www.SMCStrong.org](http://www.SMCStrong.org) for more information.

Local celebrities are also **#SMCStrong**. Check out their messages at:

<https://www.smcstrong.org/localcelebritiesaresmcstrong>

---

